

J Sainsbury plc: Board of Directors



Philip Hampton *

Chairman

Appointed Chairman on 19 July 2004. He was Group Finance Director of Lloyds TSB Group plc from 2002 to 2004, Group Finance Director of BT Group plc from 2000 to 2002, Group Finance Director of BG Group plc from 1997 to 2000, Group Finance Director of British Gas plc from 1995 to 1997, Group Finance Director of British Steel plc from 1990 to 1995, an Executive Director of Lazards from 1981 to 1990 and a Non-Executive Director of RMC Group plc from 2002 to 2005. He was appointed Non-Executive Chairman of The Royal Bank of Scotland Group plc on 3 February 2009 and is a Non-Executive Director of Belgacom S.A. (the Belgian telecom group). Age 55.



Justin King ♥

Chief Executive

Appointed Chief Executive Officer on 29 March 2004 and is also Chairman of the Operating Board. He has been a Non-Executive Director of Staples, Inc. since September 2007 and was appointed to the Board of the London Organising Committee of the Olympic Games and Paralympic Games in January 2009. He was formerly Director of Food at Marks & Spencer plc and from 1994 to 2001 he held a number of senior positions at ASDA/WalMart in Trading, HR and Retail. Justin was previously Managing Director of Häagen Dazs UK and spent much of his early career with Mars Confectionery and Pepsi International. Age 47.



Darren Shapland

Chief Financial Officer

Appointed Chief Financial Officer on 1 August 2005 and is also Chairman of Sainsbury's Bank plc. He was formerly Group Finance Director of Carpetright plc from 2002 to 2005 and Finance Director of Superdrug Stores plc from 2000 to 2002. Between 1988 and 2000, Darren held a number of financial and operational management roles at Arcadia plc including Joint Managing Director, Arcadia Home Shopping; Finance Director of Arcadia brands; Finance Director, Top Shop/Top Man (Burton Group) and Director of Supply Chain Programme (Burton Group). Age 42.



Mike Coupe

Trading Director

Appointed an Executive Director on 1 August 2007 and has been a member of the Operating Board since October 2004. He joined Sainsbury's from Big Food Group where he was a Board Director of Big Food Group plc and Managing Director of Iceland Food Stores. Mike previously worked for both ASDA and Tesco, where he served in a variety of senior management roles. Age 48.

Life President

Lord Sainsbury of Preston Candover KG

Key to Committee Members

- ◆ Remuneration Committee
- Audit Committee
- * Nomination Committee
- ♥ Corporate Responsibility Committee
- ◆●*♥ Denotes Chairman of Committee



Val Gooding ♦ *

Non-Executive Director

Appointed a Non-Executive Director on 11 January 2007. She was formerly Chief Executive of BUPA from August 1998 to May 2008, which she joined from British Airways, and is a Non-Executive Director of Standard Chartered Bank plc. Val is a member of the BBC's Executive Board, and the Advisory Board of the Warwick Business School. She is a Trustee of the British Museum, and a Non-Executive Director of the Lawn Tennis Association. She was formerly a Non-Executive Director of Compass Group plc and BAA plc. Age 58.



Gary Hughes ● *

Non-Executive Director

Appointed a Non-Executive Director on 1 January 2005. Gary is Chief Financial Officer of the Gala Coral Group. Formerly he was Chief Executive of CMP Information Limited – a division of United Business Media plc from 2006 to 2008, Group Finance Director of Emap plc from 2000 to 2005, Group Finance Director of SMG plc from 1996 to 2000, and Deputy Finance Director of Forte plc from 1994 to 1996. Prior to this Gary held a number of senior management positions with Guinness plc in the UK and in North America. Age 47.



Bob Stack ♦ *

Non-Executive Director

Appointed a Non-Executive Director on 1 January 2005. He was a Director of Cadbury plc until December 2008. He joined Cadbury Beverages in the US in 1990 and was first appointed to the Board of Cadbury Schweppes plc in May 1996 as Group Human Resources Director. In March 2000 he was appointed Chief Human Resources Officer and took on responsibility for communication and external affairs in addition to HR. Bob is Trustee and Non-Executive Director of Earthwatch International and also a Non-Executive Director of IMI plc and a Visiting Professor at Henley Management College. Age 58.



Dr John McAdam ● *

Senior Independent Director

Appointed a Non-Executive Director on 1 September 2005. He is Chairman of Rentokil Initial plc and United Utilities plc. He is also a Non-Executive Director of Rolls-Royce Group plc and Sara Lee Corporation. John joined Unilever as a management trainee in 1974 and went on to hold a number of senior positions in Birds Eye Walls, Quest and Unichema, before the sale of the Specialty Chemical Businesses to ICI in 1997. He was Chief Executive of ICI plc, until its sale to Akzo Nobel, and was formerly Non-Executive Director of Severn Trent plc from 2000 to 2005. Age 61.



Anna Ford ♦ * ♥

Non-Executive Director

Appointed a Non-Executive Director on 2 May 2006. She retired from the BBC in 2006, after 32 years in News and Current Affairs. Anna is a Non-Executive Director of N Brown Group plc and has been a Trustee of the Royal Botanical Gardens in Kew, London; a Fellow of the Royal Geographical Society; a Trustee of Forum for the Future; and an Honorary Bencher of Middle Temple. Age 65.



Mary Harris ● * ♥

Non-Executive Director

Appointed a Non-Executive Director on 1 August 2007. She is a member of the supervisory boards of TNT NV and Unibail-Rodamco S.A. Mary previously spent much of her career with McKinsey & Company, most recently as a partner, and her previous work experience included working for PepsiCo in Greece and the UK as a sales and marketing executive. Age 43.

The Operating Board

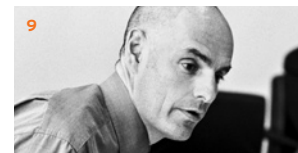
Justin King (1)
See page 24



Darren Shaplund (2)
See page 24



Mike Coupe (3)
See page 24



Tim Fallowfield (4)
Company Secretary
Company Secretary since 2001. A member of the Operating Board, Tim joined from Exel plc, the global logistics company where he was Company Secretary and Head of Legal Services (1994-2001). Prior to this he worked at Clifford Chance and is a qualified solicitor.

Luke Jensen (5)
Strategy Director
Luke joined Sainsbury's in 2008 from the retail and consumer practice at the strategy consulting firm OC&C. In this role, he has advised the boards of many leading UK and international retail and FMCG companies and private equity groups. Previous roles include, 2004-2008: OC&C UK, Director/Partner and Head of FMCG, Consumer and Retail Practice; 2002-2003: M8 Group, UK, Founder and Group FD/Executive Director; 2001-2002: NAO, UK, Joint Managing Director and Chairman; 1992-2000: OC&C UK, Director/Partner; 1988-1991: Banque Paribas, Manager, Acquisition Finance. Joined the Operating Board in June 2008.

Angela Morrison (6)
IT and Change Director
Angela joined Sainsbury's from ASDA/Wal-Mart in March 2005 as IT Director. Joined the Operating Board in June 2008. At ASDA/Wal-Mart she held a number of roles including, 2001-2005: European Strategy Director; 1999-2001: IT Director; 1997-1999: Director of E-Commerce; 1996-1997: IT Strategy Manager.

John Rogers (7)
Property Director
John joined Sainsbury's in March 2005 as Director of Corporate Finance; from March 2007 to June 2008, he was Director of Group Finance. Joined the Operating Board in June 2008. Prior to Sainsbury's, John was Group Finance Director for Hanover Acceptances, a diversified corporation with wholly owned subsidiaries in the food manufacturing, real-estate and agri-business sectors. Previous roles include Senior Manager at Monitor Company and Manager at Arthur Andersen.

Gwyn Burr (8)
Customer Director
Joined the Operating Board in 2004. Director of Sainsbury's Bank plc. Gwyn has over 20 years' business experience, including five with Nestlé Rowntree and over 13 with ASDA/Wal-Mart. At ASDA, she held various Board level positions across Own Brand, Marketing, Customer Service and Retail.

Roger Burnley (9)
Retail and Logistics Director
Joined the Operating Board in March 2006 as Supply Chain Director and in April 2008 he assumed the new role of Retail & Logistics Director. Roger was previously Supply Chain Director at Matalan. He spent his early career in retail management and buying at B&Q before joining ASDA/Wal-Mart, where he held a number of positions before becoming Supply Chain Director in 2001.

Imelda Walsh (10)
HR Director
HR Director since October 2001. Joined the Operating Board when formed in May 2004. Before this was a member of the Board of Sainsbury's Supermarkets Ltd from March 2003. Director of Sainsbury's Bank plc. Prior to joining Sainsbury's, worked for Barclays Retail Financial Services, Coca-Cola and Schweppes Beverages. Author of the Flexible working review, published May 2008.

Dido Harding (11)
Convenience Director
Joined the Operating Board in March 2008. Dido joined Sainsbury's from Tesco where she held a variety of senior roles both in their UK and international businesses. Prior to this she worked at Kingfisher plc and Thomas Cook Ltd where she gained considerable retail experience. She began her career as a consultant with McKinsey.

Neil Sachdev (12)
Commercial Services Director
Joined Sainsbury's in March 2007 as Commercial Director following 28 years at Tesco, where he worked in a range of different business areas including, January 2000-August 2006: Stores Board Director UK Property/Operations; September 1999-January 2000: Supply Chain Director; September 1998-September 1999: Director, Competition Commission; February 1998-September 1998: Support Director; October 1994-July 1998: Retail Director. Joined the Operating Board in June 2008.